

English II

with Mrs. Braun



Description

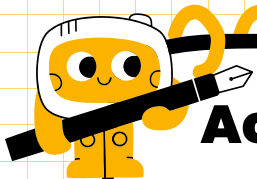
We will read a variety of short stories, books, poems, plays, and speeches.

We will write a variety of short works, analytical responses, and informative and persuasive papers.

We will learn to apply writing and grammar skills to real-world applications.

Materials Needed

- ☐ Charged Chromebook
- ☐ Writing Utensil
- ☐ Novel of your Choice
- ☐ Good Attitude
- ☐ Work Ethic



Academic Honesty

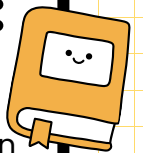
Academic Honesty is making the choice to turn in your work and only your work.

Academic dishonesty (including plagiarism, cheating and/or AI-generated work) will not be tolerated. Such behavior will result in an automatic 0% without a chance for revision, a discipline referral, and a call home.

Meet the Teacher:

Welcome to English II!

A little bit about me: I am a Jefferson City native and live here with my husband and 2 kids - 15 (sophomore at JC), and 13 (8th grade at LCMS). I have two other kiddos that have left the nest - Cheyenne (25) and Cody (23). I am a Gigi to one and one on the way! My husband and I enjoy attending several different JC events, playing cards and hanging out with family! I am excited to be kicking off my first year here at JCHS!!



Contact

Jessica.Braun@jcschools.us



English II – Late work/Grading

When students turn formative work in late, the work will lose 10% of its total score, and they may turn in formative work late up until the day of the summative.

When students turn in summative work late, they will lose 10% of its total score, and they will have 10 school days to complete the summative, but for retakes and revisions, students must adhere to the retake and revision policy below. This applies to final papers and formal presentations only. Tests will be collected at the end of the period.

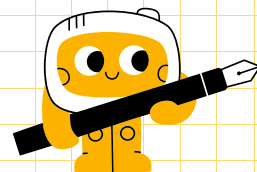
Major Papers: An additional revision cycle is available on major papers and projects for students who have completed all pre-writing, planning, and drafting activities and turned them in on time and have made meaningful revisions between rough draft and final copy or projects. For students submitting summatives late and meeting the above criteria, they can earn up to 90% through the revision process.

Benchmark Assessments (Tests): Because a benchmark assessment is intended to be a summative or final assessment of student understanding of a unit, in order to retake or revise an assessment, students must visit with their teacher before/after school virtually or in person, and/or, at teacher discretion, demonstrate additional preparation. Students must also have completed all formative activities that led up to the summative. Students have 10 school days to retake or revise a summative.

For formative assessments and writings worth fewer than 50 points, students may retake or revise before the end of the unit/the day of the summative assessment.

There are no revisions or retakes for term or semester final assessments.

Formative 30% : Daily work, participation in discussion, homework and quizzes.



Summative 60%: Tests, final papers and formal presentations.

Final 10%: Midterms and Final

Contact

Jessica.Braun@jcschools.us

